

CERTIFICATE OF LOCATION OF GOVERNMENT CORNER

EAST QUARTER Corner of Section 3, Township 107, Range 42, 5TH P.M.

STATE OF MINNESOTA, County of MURRAY

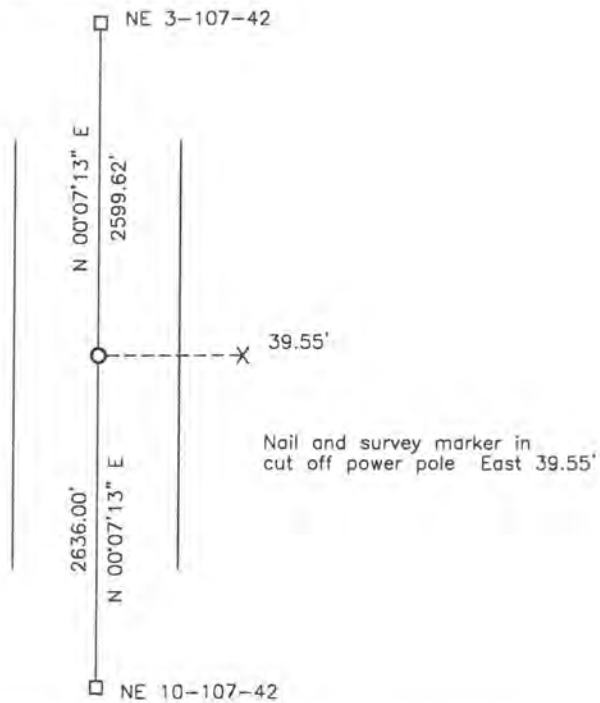
At the corner location shown on the sketch:

On 11-21-2012 found a 5/8" IRON OVER STONE.

left monument as found, lowered monument, removed monument (explain)

On _____ placed a _____

SKETCH OF REFERENCE TIES



Minnesota State Plane Coordinate
System Murray County Datum
NAD83 (1996)

N: 192699.820
E: 474513.271

Statement of evidence relative to this corner location is on back of page.

I hereby certify that this document and the data contained herein was prepared by me or under my direct supervision.

[Signature]

Daniel L. Buetlel
License No. 43844

9/25/18
DATE

STATE OF MINNESOTA, } ss.
COUNTY OF MURRAY, }

I hereby certify that the within Instrument was filed in this office for record on the 5TH day of FEBRUARY A.D. 20 19 at 9:00 o'clock A. M., and was duly recorded as Document No. _____

[Signature]
County Recorder

Statement of Evidence

E1/4 3-107-42

In 1861, L. G. M. Fletcher did the original subdivision of the township.

On November 21, 2012, Bueltel-Moseng Land Surveying found a $\frac{5}{8}$ " iron over a stone at the corner.